

CAST SASH PULLEY



- PART # HCP2.5-605 2 1/2" CAST BRASS SASH PULLEY W/ BALL-BEARING
(UNLACQUERED POLISHED BRASS)

This pulley is the finest cast sash pulley made anywhere. It is sand cast in Brass and features a removable stepped bushing to provide for custom finishing. The pulley wheel rotates around a precision, sealed ball-bearing, held by a stainless threaded shaft.. Tested by an independent test lab, rated at 1300lbs working load. Also available in custom finishes.

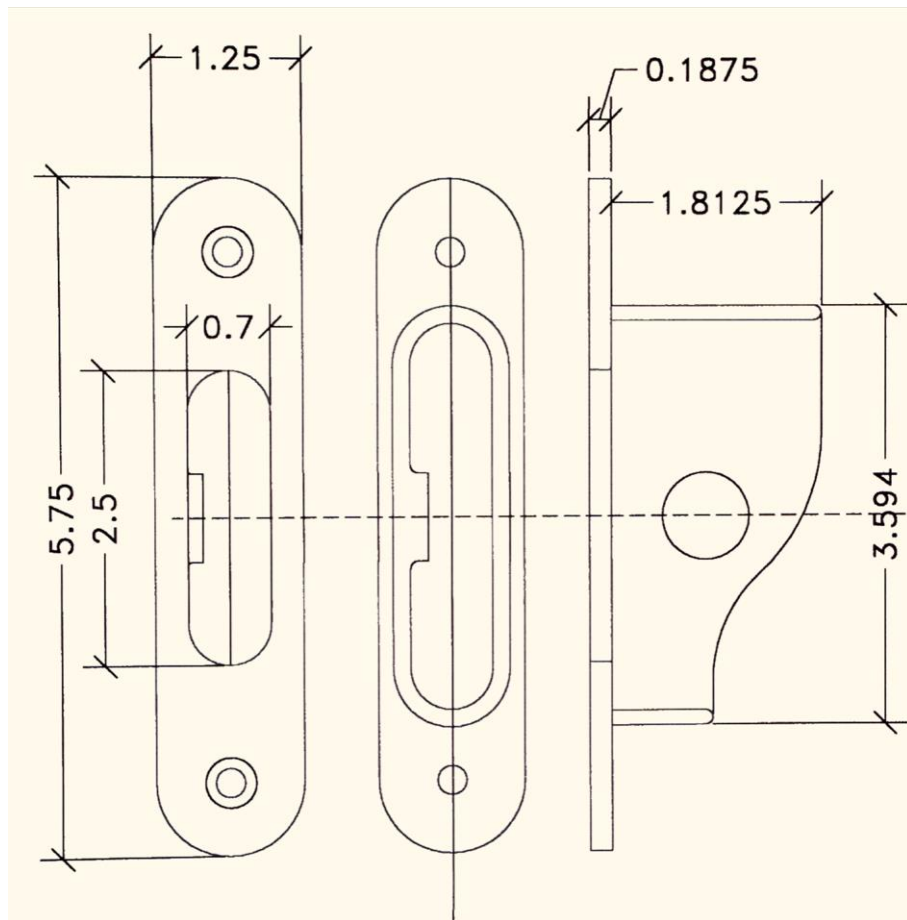
CAST SASH PULLEY

EDITION 4.0h



P 1

CAST SASH PULLEY



DRAWING NOT TO SCALE

- PART # HCP2.5 (ALL FINISHES) CAST SASH PULLEY W/BALL-BEARING

Designed with a heavy boss on the inside of the housing to reference the inner race of the ball-bearing. Precision machined by CNC to close tolerances for ease of assembly and operation. Easy disassembly for custom finishing.



EDITION 4.0h

P 1A